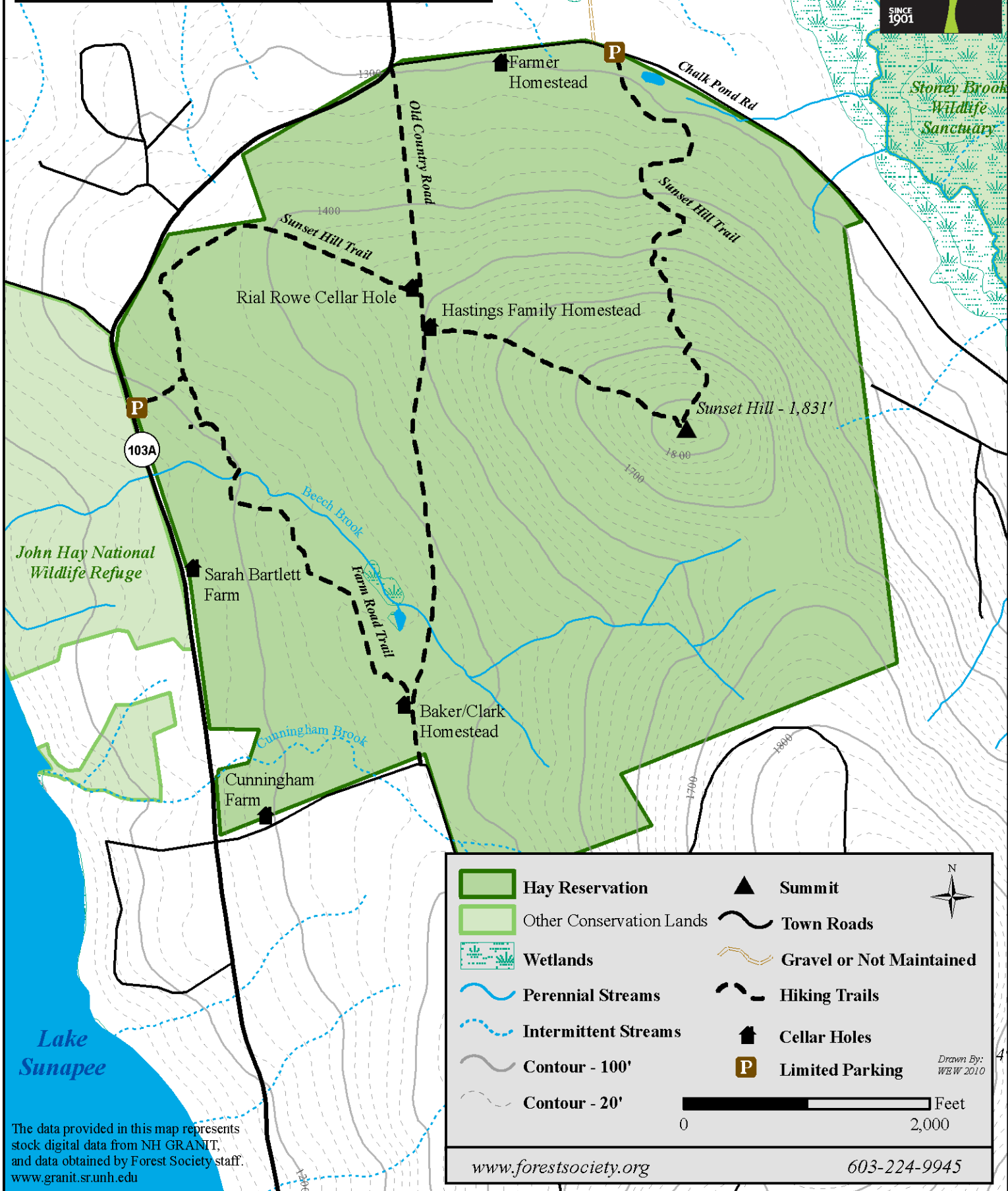


C. L. Hay Forest and Wildlife Management Area

719 Acres Newbury, NH

SOCIETY FOR THE PROTECTION OF NEW HAMPSHIRE FORESTS



	Hay Reservation		Summit	
	Other Conservation Lands		Town Roads	
	Wetlands		Gravel or Not Maintained	
	Perennial Streams		Hiking Trails	
	Intermittent Streams		Cellar Holes	<i>Drawn By: WEW 2010</i>
	Contour - 100'		Limited Parking	
	Contour - 20'			

The data provided in this map represents stock digital data from NH GRANIT, and data obtained by Forest Society staff. www.granit.sr.unh.edu

www.forestsociety.org

603-224-9945